

COMMUNITY NEWSLETTER

An update from Monaro Rock

May 2024

Welcome to the first Monaro Rock Royalla Quarry newsletter for 2024. A lot has been happening since our last newsletter in September 2021 (not the least of which was the knock-on impact of the COVID-19 pandemic).

Following our initial meetings with the Royalla community, we have been reviewing and incorporating your feedback as we refine our project plans to ensure we meet the relevant health, safety and environmental criteria and satisfy reasonable community expectations.

We'd like to thank you for your comments and suggestions during those early discussions. We realise some of you have concerns about the project and we are committed to ensuring these are addressed wherever possible, and that you have every opportunity to speak with us directly.

Monaro Rock is not just a company; it's a community member, founded and operated by local families. It is our priority to ensure the proposed Monaro Rock Quarry operates side by side with the community.

Community updates

This newsletter, which we aim to distribute every couple of months, is one of several ways in which we will share project updates with you. We'll keep you informed on planning processes, timelines and expert assessments. We will also notify you of opportunities for online and face-to-face meetings with our project team, as well as some site tours we have planned.

The Monaro Rock website at www.monarorock.com.au is where you will find fact sheets, FAQs and other project information, as well as a contact us link where you can get in touch with us directly.

If you have friends, neighbours, colleagues or others who may benefit from these updates please encourage them to visit the website and sign up to receive our newsletter.



We are listening

During our 2021 community meetings, you raised issues including the project's potential impact on local water, physical disturbance and road access. Your input has been shaping our approach since then, and we have revisited several areas of the original plan including:

- A detailed review of the groundwater setting to understand if there are risks to local groundwater users.
- Assessment and design of an alternative quarry access option that would directly link to Old Cooma Road around Beatty Hill. This option was ultimately rejected due to transport, biodiversity, visual and design risks.
- Detailed planning for the progressive development of the site to account for expected demand.
- Completion of an amenity barrier design that will obscure views of the operation.
- Mitigation of dust generation and dispersion by including enclosures on fixed processing equipment.
- Avoidance of vegetation clearing, especially box gum woodland, along the access road and on site. A tree screening and planted area has been added.

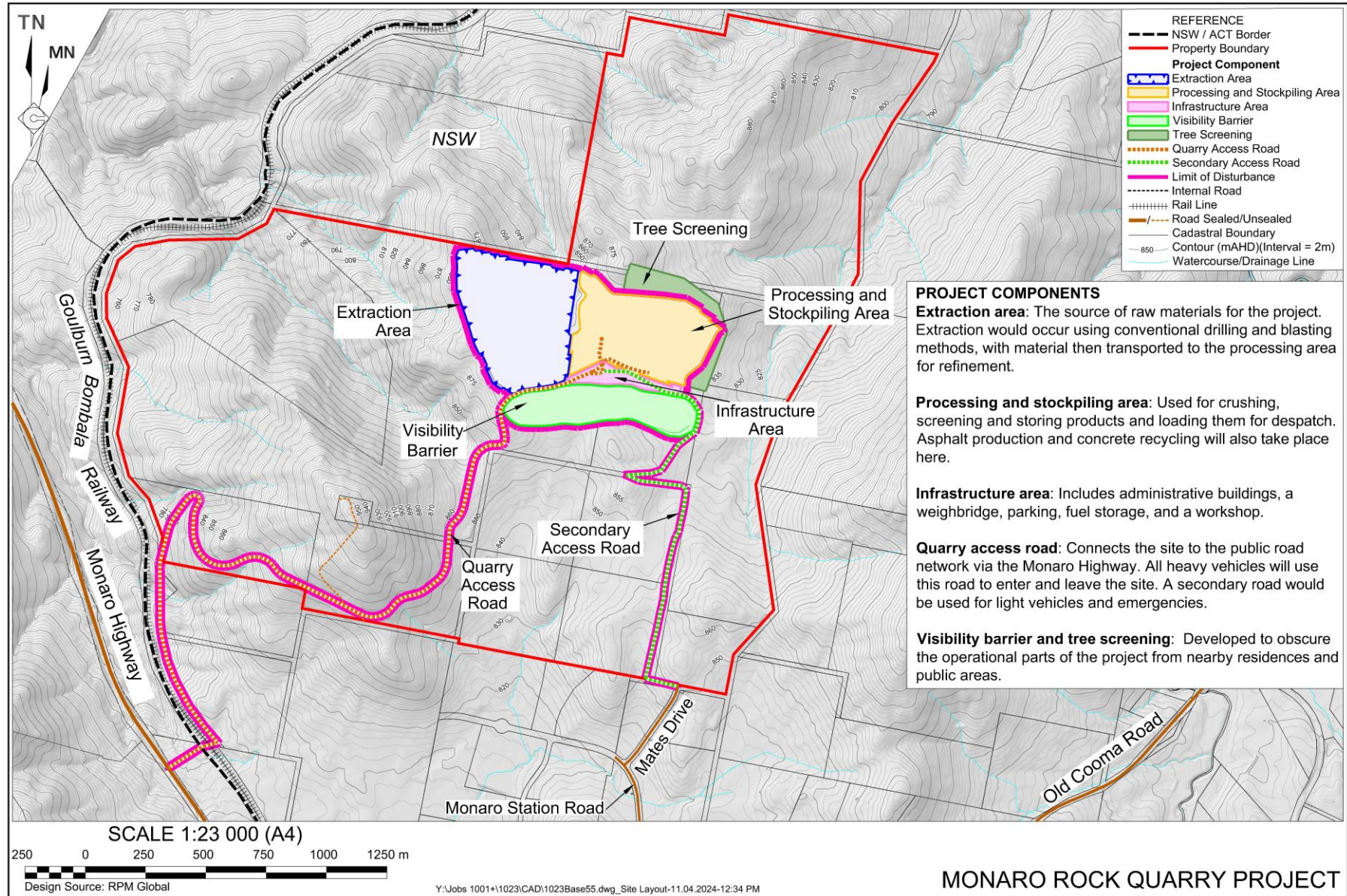
Before any work can begin on the proposed quarry, a detailed environmental impact assessment, as well as a comprehensive assessment of potential effects on health, the local economy and Aboriginal cultural heritage, must be completed. The Monaro Rock Quarry Environmental Impact Statement will be publicly exhibited by the NSW Department of Planning, Housing and Infrastructure and you will have an opportunity to provide comments directly to the NSW Government.

Project overview

We are pleased to be able to provide more detail on the proposed quarry footprint. The following map is a visual representation of the principal components of the quarry.

Upcoming events

1. **Tuesday 11 June 2024:** Community members will be invited to attend a virtual meeting in which more detailed information on the quarry design will be presented, with opportunities to ask questions. An email inviting people to attend this meeting will be sent to registered email addresses in the coming days. If you have not done so already, please register your email address with us to receive a meeting invite and future updates. We encourage you to forward the meeting invitation to others.
2. **June/July 2024:** Guided site tours will be conducted so you have an opportunity to see the location first-hand and ask further questions about the project. Detailed information, including dates of the bus tours, will be shared at our virtual meeting and in our next newsletter.





Scoping of the Project

Preparation and submission of a scoping report to commence consultation with the NSW Government on the Planning Secretary's Environmental Assessment Requirements (SEARs) which prescribe the information that must be included in the project's Environmental Impact Statement (EIS).

WE ARE HERE



Preparation of the EIS

The proposed project is described in detail alongside review of existing conditions and the strategic and legislative context for the development. Baseline monitoring data is then used to inform technical assessment of the potential environmental impacts of the project.



Public Exhibition

The completed EIS will be publicly exhibited for at least 28 days, during which time the community is given opportunity to provide further feedback directly to the NSW Government.



Response to Submissions

Monaro Rock will be requested to prepare a submissions report, responding to the matters raised by Government and community stakeholders.



Assessment by Government

The NSW Department of Planning will lead the NSW Government assessment of the project, culminating in an assessment report.



Determination

The project will then be evaluated by the consent authority and a decision made to approve or refuse the development application.

Indicative approval pathway

We have provided a summary of the planning approval pathway for the project to let you know the processes required and where we are up to in that process.

We welcome your feedback

R.W. Corkery & Co. will continue to manage the environmental impact assessment processes for the Project.

Please contact our project representative Nick Warren on 0437 635 975 or nick@rwcorkery.com with your queries.

We have also commissioned Jane Seaborn of Landscape Research + Communications to undertake a Social Impact Assessment for the project.

Jane is eager to speak to community members and we invite you to contact her directly on 0414 829 282 or jane@landscaperesearch.com.au.